



 **pietra**

SOLID SURFACE WORKTOPS



PIETRA | SOLID SURFACE WORKTOPS



## SOLID SURFACE WORKTOPS

Pietra solid surface worktops are composed of high performance resins & natural minerals to enhance the appearance within the kitchen environment. Such is the make up & enduring quality of the Pietra product that it is guaranteed against manufacturing defects for 10 years.



**i** Due to Limitations of photography and the printing process, image reproductions may not be accurate and should be considered as guidance only

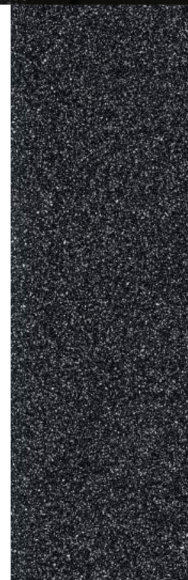


## CHOICE

The full Pietra Range of 12 designs offers a stunning colour palette. The range features both rich and radiant colours to compliment both contemporary and traditional kitchens.

Clean flowing lines and the cool touch of solid stone enhances the appearance of any kitchen design.

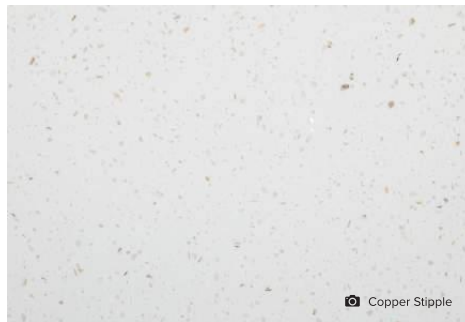
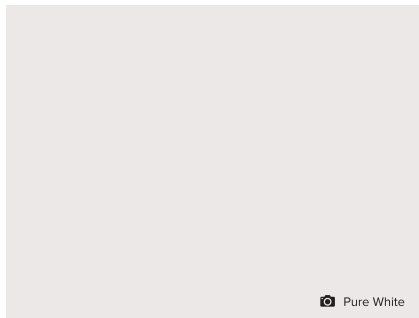
- 12 decors available to choose from
- 25mm Worktops in a choice of sizes
- All available with 12mm Upstands
- 10 Year Manufacture Guarantee



# DESIGNED FOR YOU

Pietra worktops enables you to create one-of-a-kind Designs. The consistent colours and patterns, which run all the way throughout the 25mm thick work surface, cannot wear away, giving timeless beauty that can be restored to its original condition.

- Up to date colour palette
- 25mm Solid surface throughout
- With a solid core throughout the product can be used for:
  - Drain grooves
  - Undermount sinks
  - Curves
- Scratches & damages can be restored
- Seamless joints due to no grout lines



# DESIGN & FIT

Pietra worktop material is easy to shape using woodworking tools. The nature of the product results in inconspicuous seams which lead to endless design possibilities.

- No specialist fitting tools required.
- All solid surface worktops can be installed on site.
- Installation kits and the detailed fabrication manuals are available for fitting support.
- Care and maintenance kits available.



Arctic River



📷 Carrara Marble



📷 Copper Stipple

## FLEXIBLE SOLUTIONS

Solid surface material offers the flexibility to meet design needs without incurring the cost of specialised installation.

Faster lead times cut out the wait & costs usually associated with choosing a stone or granite work surface.

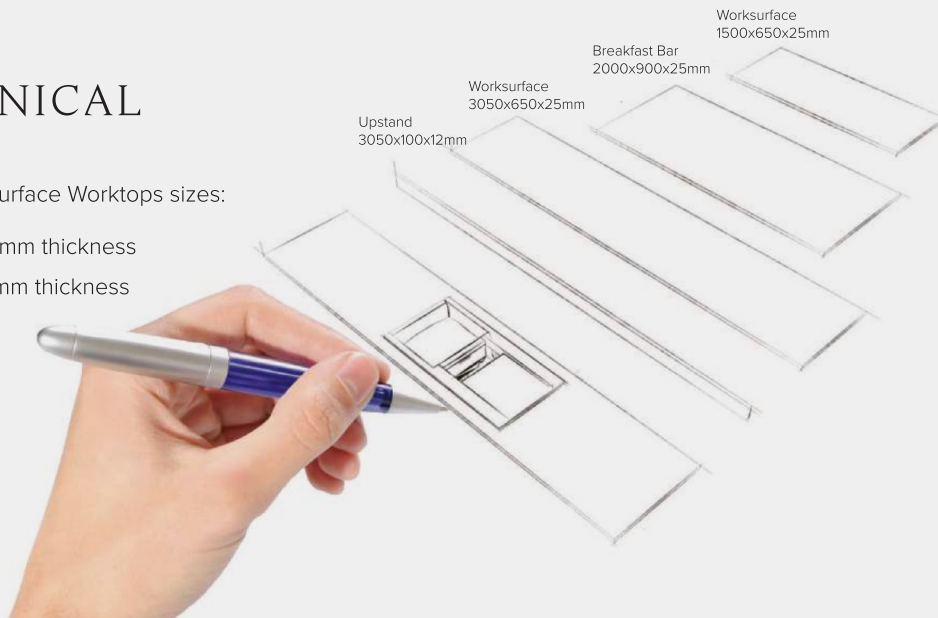
- A UK stocked product
- No Templates required
- Reduced lead time & costs

# TECHNICAL

Pietra Solid Surface Worktops sizes:

Worktops: 25mm thickness

Upstands: 12mm thickness



## FITTING TOOLS

Fitting your pietra worktop does not require specialist tools, it can easily be cut and installed onsite using standard woodworking tools and equipments such as.....



### Circular Saw

For sizing worksurfaces on site. Some saw manufacturers have blades specified for solid surface material, these can have greater longevity than standard blades.



### Jig-Saw

For the rough cutting of overmount cut-outs such as appliances, hobs, and drop-on sinks.



### Router

Performs the neat cut-outs, trimming, shaping, edge profiling, and other detailed tasks such as drainer grooves. We recommend you use high quality tungsten carbide cutters.



### Random Orbital Sander

Used for the finishing of the worktops such as polishing and smoothing of the joints. This can also be used with pads and cleaners supplied in the pietra installation kits.



### Extraction

To effectively remove dust and material debris ensuring a clean environment.



### Worktop Jigs

A guide for the router when performing operations such as undermounts /overmounts, cutouts and adding drainer grooves.



# INSTALLATION KITS & ACCESSORIES



Pietra Solid Surface Installation Kits include items a fitter requires to install a Solid Surface Worktop.

## Kit Contents:

- Installation and Care & Maintenance Guide
- Self Adhesive Heat Reflective Foil Sheets x2
- Heat Reflective Tape
- Abranet Sanding Disc 100, 150 & 220 grit
- Fixings Pack (12 brackets / 48 screws & washers)
- Alcohol Wipes x2
- Solid Surface Rejuvenate
- Solid Surface Worktop Cleaner
- Disposable Gloves
- Sanding Foam Pad 180 Grit
- Abrasive Disc Pad White, Grey and Maroon
- Microfibre Cloth

## Other items available for installation include:

- 50ml Adhesive
- Application Gun
- Seam Setter  
(Used to level the top surfaces, hold the worktops in place and pull jointing faces together, during the jointing procedure.)
- Fixing clamps  
(Used to hold items in place while they are being jointed)
- Sanding / Polishing discs  
(2xP400 / 2xP600 / 2xP800 / 1xP1000 / 1xP2000 (Suitable for 2 Worktops))

# CARE & MAINTENANCE

Pietra Solid Surface Care & Maintenance Kit includes items help to look after your Solid Surface Worktop. Unlike most other work surfaces, Solid Surface can be repaired. So little accidents, stains or scratches can usually be removed with relative ease.

Most dirt and residue can be easily wiped off with a damp cloth and soapy water. Persistent marks can be removed by using a mild abrasive cleaner, harsh scouring powders should be avoided.

## Kit Contents:

- Care & Maintenance Guide
- Solid Surface Rejuvenate
- Solid Surface Worktop Cleaner
- Sanding foam pad 180 grit
- Abrasive Disc Pad White, Grey and Maroon
- Microfibre Cloth
- Disposable Gloves



For full information on fitting instructions and maintenance, please visit our website: [www.pietraworktops.co.uk](http://www.pietraworktops.co.uk) to download our Fabrication manuals

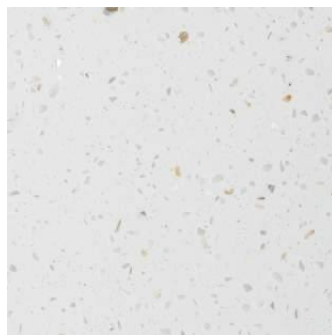
WWW.PIETRAWORKTOPS.CO.UK



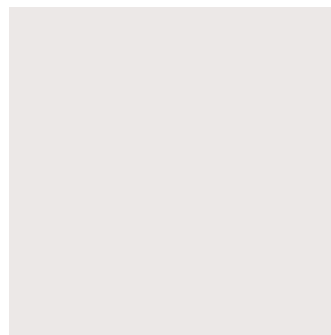
# DECOR RANGE

Size Availability:

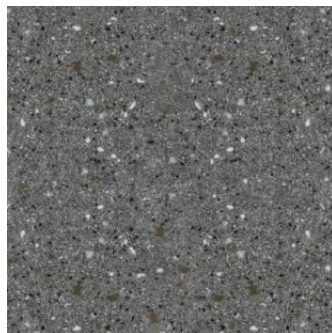
- 3050 x 650 x 25mm
- 1500 x 650 x 25mm
- 2000 x 900 x 25mm
- Upstand 3050 x 100 x 12mm



Copper Stipple



Pure White



Baltic Brown



Black Fizz



Light Concrete



Dark Concrete



Carrara Marble



Luna Ice



Paper Moon



Calacatta



Arctic River



Stone Haze



SOLID SURFACE WORKTOPS

---

[www.pietraworktops.co.uk](http://www.pietraworktops.co.uk)

